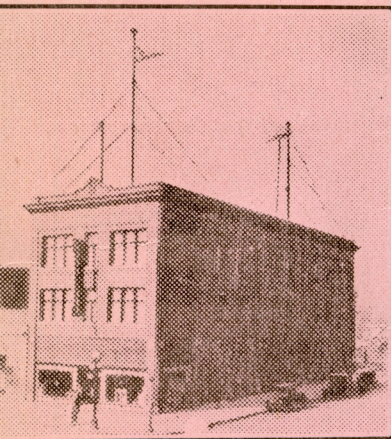
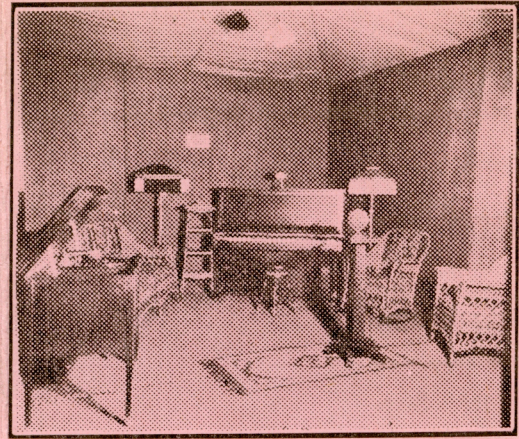


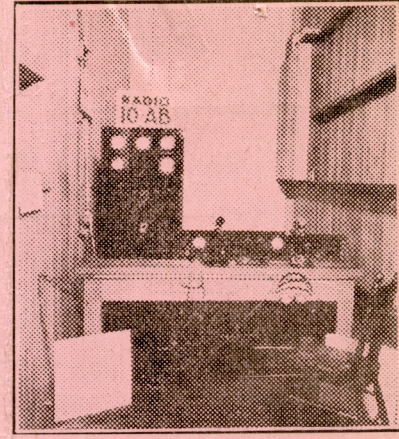
MILL CITY STATION 10AB, MOOSE JAW, SASKATCHEWAN, CAN.



Antenna System



Corner in Studio.



Operating Room.
Photos by Bidwell Studio

This Station has its home in the Studios of Bellamy Furniture Co. Ltd. It is owned and operated by the MOOSE JAW RADIO ASSOCIATION. On the air ^{Tuesday} Monday and Thursday evenings at 8.30, and Sunday afternoons at 3.30 Mountain Standard time. Equipment: 1—50 watt oscillator and 1—50 watt modulator, Heising system in a Colpitt's Circuit, with two stage speech amplifier. Esco 1,000 watt motor-generator, Antenna 48 feet above building. Counterpoise four feet above building. No ground used. Wave length 250 meters. Phone 3474. *† Sunday @ 7 p.m.*

A decorative banner with the words "POST CARD" written in a serif font. The banner is stylized with curled ends and a central fold.

Moose Jaw, Sask., Canada

.....192.....

Dear Radiophan,—

We appreciate very much your favourable report on program of.....

What features do you like best? Suggestions very acceptable and would appreciate your further report.

What kind of a receiver are you using?

Hope you will tune in on us often and that you will enjoy our future programs.

Moose Jaw Radio Association.