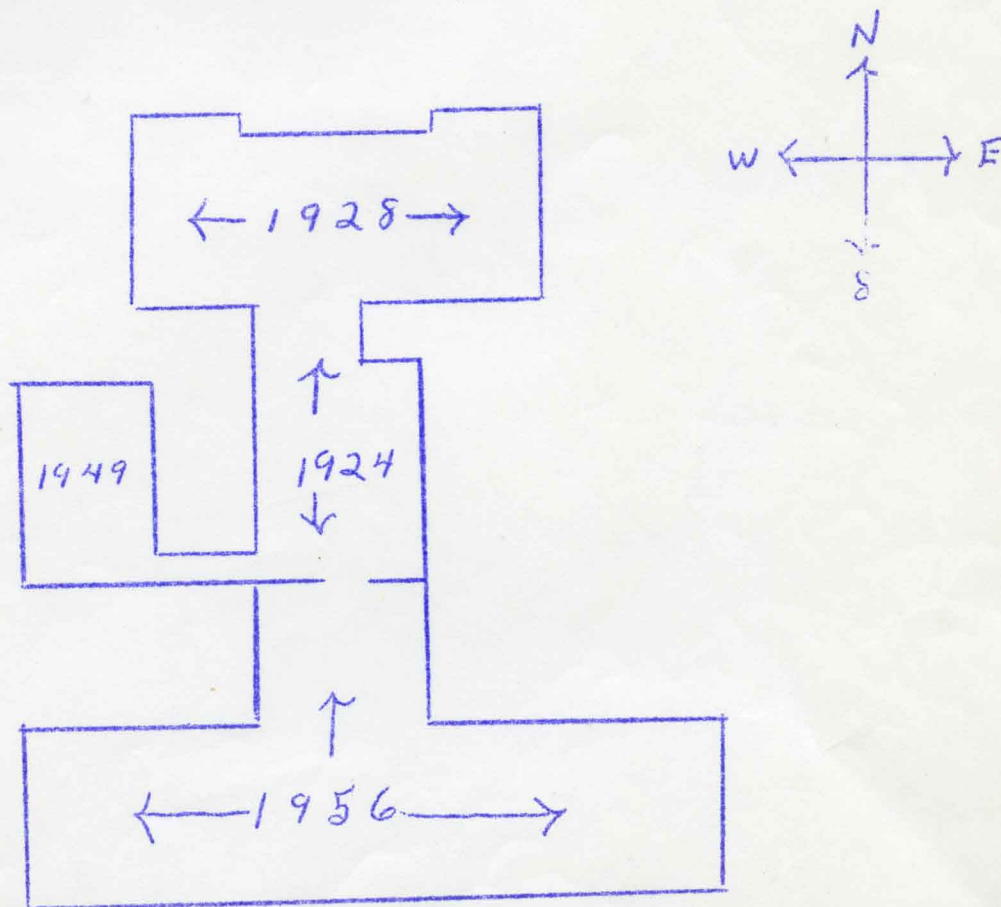
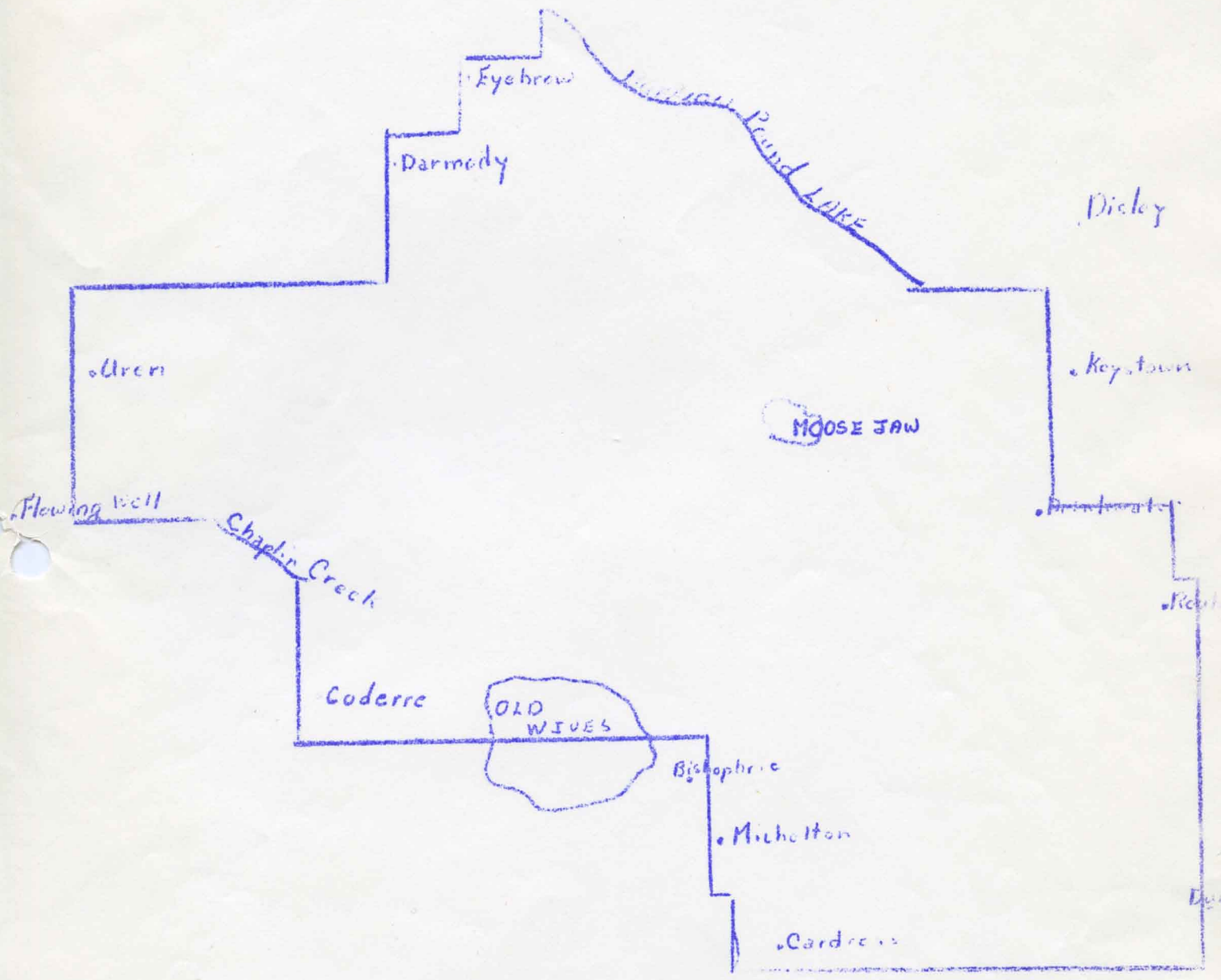


"Additions Made to the Hospital"

- 1924 North Wing opened, now called "middle wing" on the north-end.
- 1928 North Wing East and West opened.
- 1949 Area with Childrens' Ward, Laboratory and Nurses' Lockers opened.
- 1954 Original old hospital demolished.
- 1956 July - the six storey "new wing" or south wing was opened.



Area Served by Our Hospital



"MOOSE JAW UNION HOSPITAL"

"Its Beginning"

At the request of the Daughters of the Empire in April 1903, Major Unwin called a public meeting to discuss the possibility of a hospital, which met with success. In June 1903, the contract for brick and stonework on the hospital was let. This hospital was opened on April 17, 1906, with a capacity of twenty-eight beds. Mr. E.R. Hopkins was the first President of the Board of Directors and Miss K.E. Smith, the first Lady Superintendent. This hospital was called the Moose Jaw General Hospital.

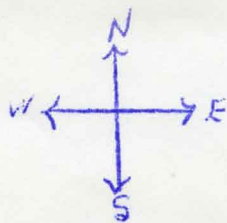
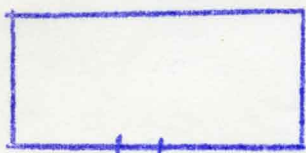
In the hospital the nurses' rooms were on the third floor and during the typhoid epidemic of 1906, when extra nurses were needed, the day and night nurses shared the same beds like Box and Cox and twenty-two extra beds for patients were added. Some of the patients were in the offices, some in the operating room and some in the corridors.

The following statistics from Miss Smith's report at the end of 1906, show that two hundred and sixty patients had been treated. The greatest number in one day was fifty and the smallest number was one (Mrs. John Bellamy on the opening day). The average stay per patient was 23.96 days and the number of operations was forty-two.

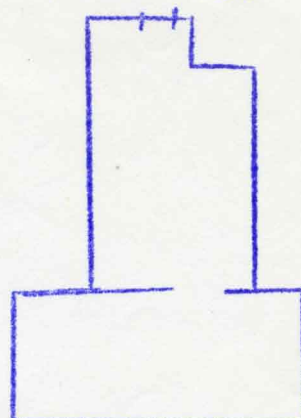
In 1912 the hospital was handed over to the city. On December 2, 1915 the first five nurses graduated from this hospital. In 1916 the first dietitian was engaged at 25 cents per hour.

Floor Plans from 1903 to Present

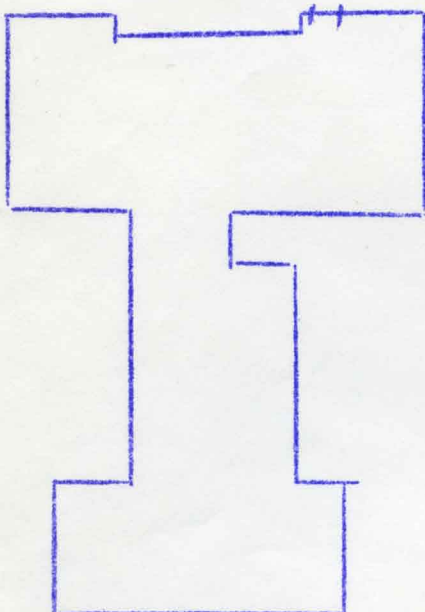
1903 - 1924



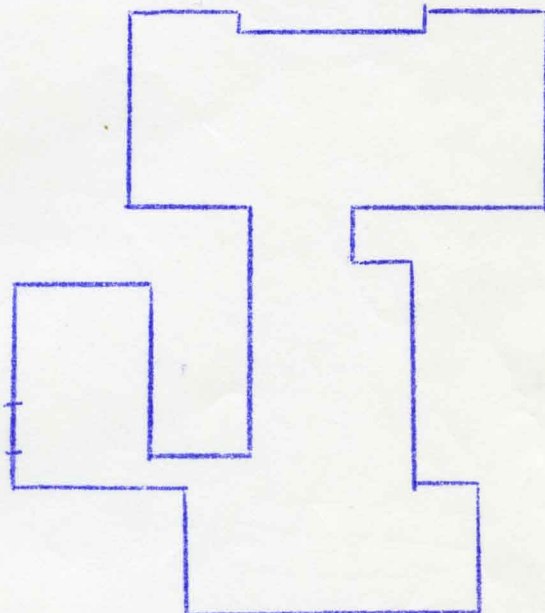
1924 - 1928



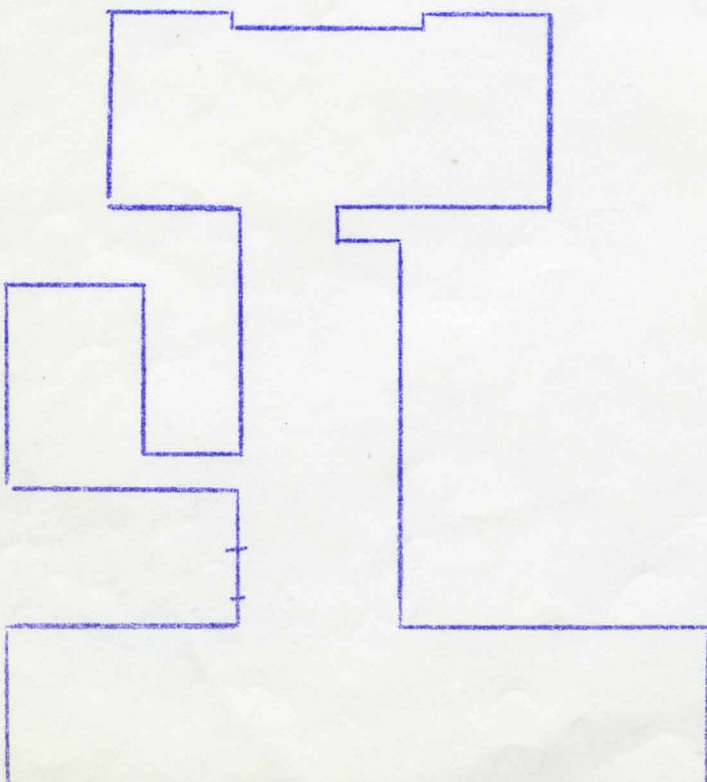
1928 - 1949



1949 - 1954



1956 -



1954 - 1956

