

1914 Traffic Truck

ANTIQUÉ AUTOS

- 1911 Ford T
- 1930 Franklin
- 1927 Hupmobile
- 1916 Maxwell
- 1918 Studebaker
- 1931 Model A
- 1928 Pontiac Truck
- 1929 Model A Truck
- 1929 Model A Snowmobile
- 1914 Traffic Truck
- 1931 Desoto
- 1928 Nash
- 1947 Buick Master
- 1928 Chrysler

This Museum will take some of us back to reminiscing days and show what is being preserved for younger generations.



Rural Church from Tilney, Saskatchewan

INTEREST TO LADIES

Washing Machines, Dishes, Lamps,
Churns and many other antique
household articles

Located
8 miles South of Moose Jaw
On No. 2 Highway

Items are from all parts of Saskatchewan and parts of the U.S.A., plus some private displays and loaned equipment.

Antique Automobile Club of Saskatchewan

NO.



309

Pioneer Village & Museum

General Delivery

Moose Jaw, Sask.

Sub Station 1

MUSEUM

ANTIQUE AUTOS

Pioneer Village & Museum

ANTIQUE TRACTORS

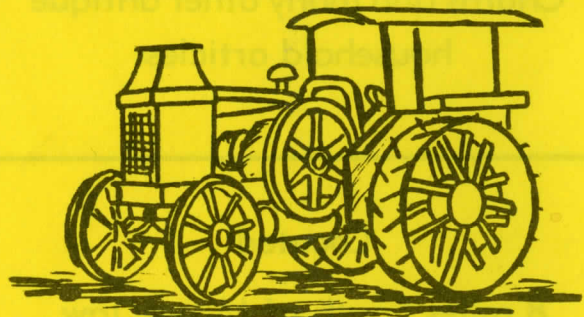
ANTIQUE FARM MACHINERY

HISTORIC ITEMS



Early Firefighting Equipment

KNOWLES MOTEL,
 BOX 936 - MOOSE JAW, SASK.
 Phone 693-3601

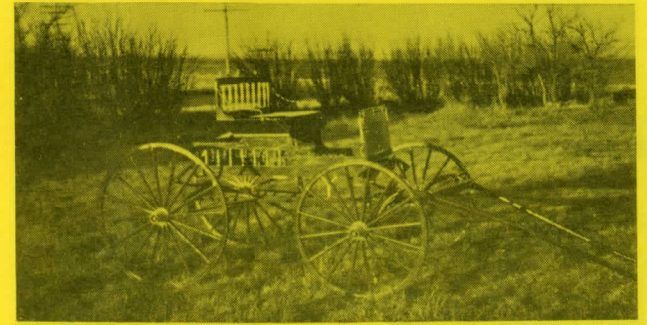


ANTIQUE TRACTORS

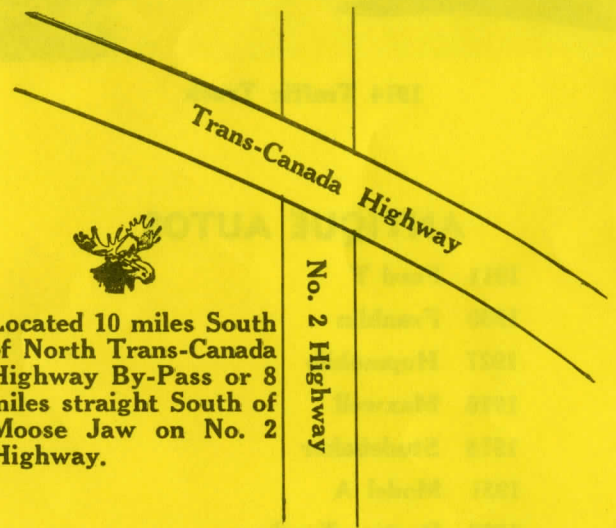
OLD FASHIONED FARM MACHINERY

and TOOLS

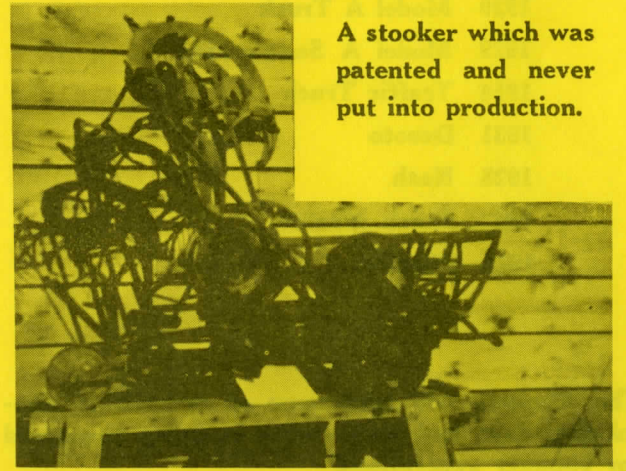
HAND THRESHER



Horse Drawn Transportation



Located 10 miles South
 of North Trans-Canada
 Highway By-Pass or 8
 miles straight South of
 Moose Jaw on No. 2
 Highway.



A stoker which was
 patented and never
 put into production.